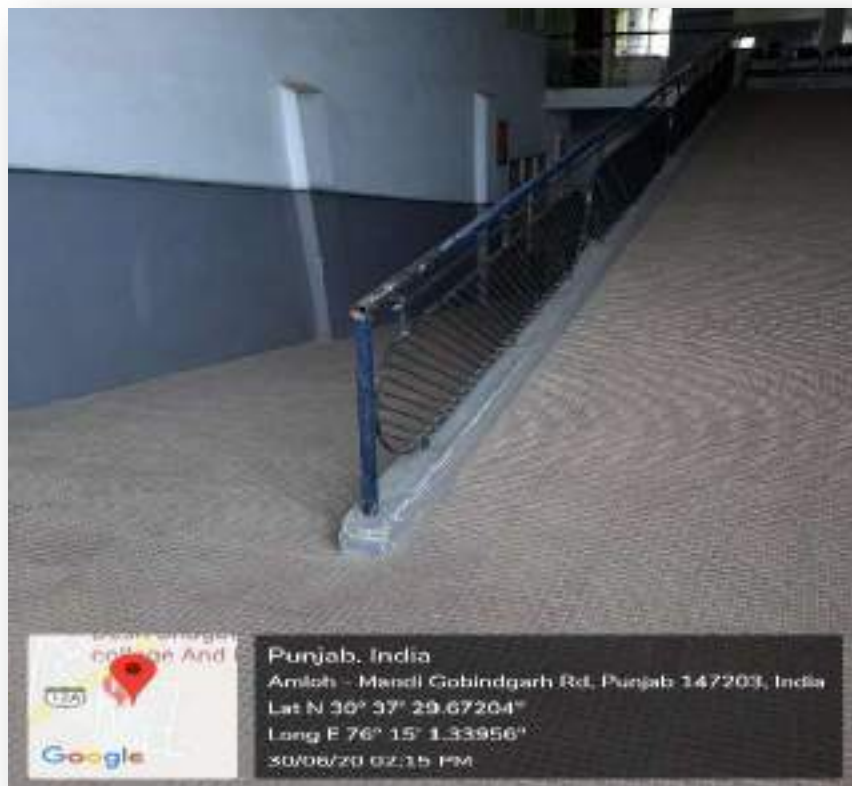


**7.1.7 The Institution has disabled-friendly, barrier free environment**

**(Geo Tagged Photographs)**

**1. Built environment with ramps/lifts for easy access to classrooms**



Ramps at University School of Ayurveda



Lift at Faculty of Information Technology  
& Library Sciences



Lift at Central Library



Lift facility at Faculty of Dental Sciences



Lift facility at Faculty of Engineering &  
Applied Sciences

## 2.Disabled-friendly washrooms



Special Washroom for differently abled.



Wash room for Divyangjan.





Special Washrooms for Differently Abled.



### 3. Signage including tactile path, lights, display boards and signposts



Signage at various places in University premises



Signage for guidance at University Campus



(U/S 2(f) and 12B of the UGC Act 1956, NAAC Accredited)

## DESH BHAGAT UNIVERSITY, MANDI GOBINDGARH

### 7.1.7 The Institution has disabled-friendly, barrier free environment

#### (Geo Tagged Photographs)

**1. Built Environment with Ramps/Lifts for Easy Access to Classrooms:** University is provided inclusive environment to support divyangjan in all aspects whether it is financial aid in study or to provide best infrastructure for them. Adding to this university has restructured ramps at three major buildings to make them more convenient. University has lifts in all major academic buildings to support disability friendly environment.



Ramp at Admission Cell





Ramp at School of Engineering & Applied Sciences



Ramps at University School of Ayurveda





Ramp at University Student Centre



Lift Facility at School of Engineering & Applied Sciences





Lift Facility at School of Agriculture & Life Sciences



Lift at Central Library



Lift facility at Faculty of Dental Sciences





**2.Disabled-Friendly Washrooms** : University has special washrooms for divyangjan at each building and floor. Adding to this support university build 4 new washrooms for disable persons this year.



Washroom for Disabled at School of Pharmacy

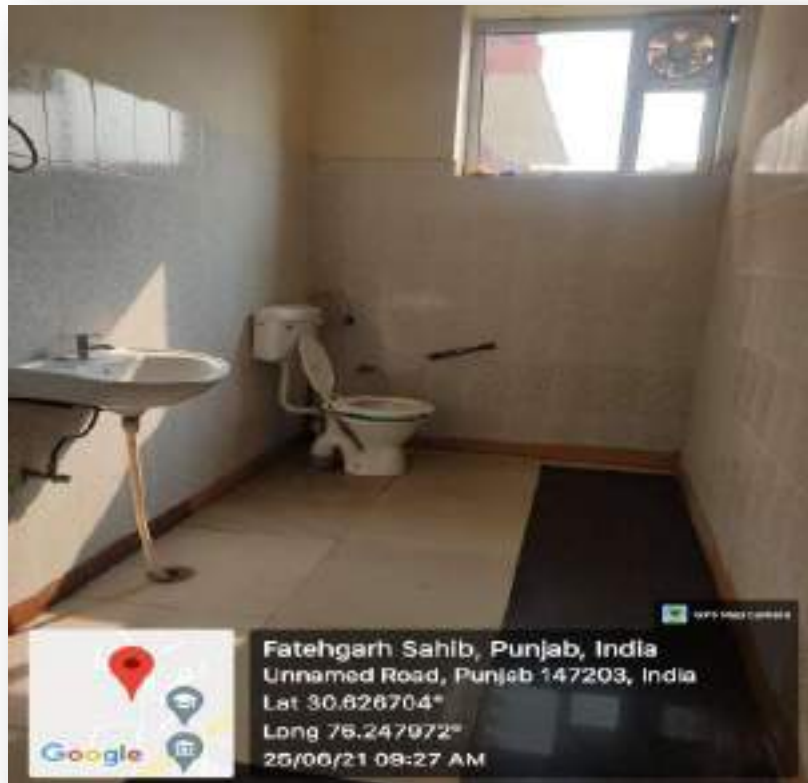


Washroom for Disabled at School of Engineering & Applied Sciences



Special Washroom for differently abled at School of Dental Sciences





Special Washrooms for Differently Abled.



Special Washrooms for Differently Abled

**3. Signage and Signposts in the Campus :** To facilitate the students and visitors university facilitated the signage's and path pointers at near each building and major points. Apart from this human support is also available at main gate and receptions to assist disabled persons in the university.



Signage Board at Faculty of Engineering & Applied Sciences



Signage Board at Student Centre







Signage Board at Gate-2



Signage at Faculty of Pharmacy

- 4. Human Assistance and Transportation Facilities :** To Facilitate the persons with disability University has provided human assistance at main gate and Wheel chair is available at all campus main gates for persons having difficulty in walking.



Availability of Wheel Chair at Main Gate





Availability of Wheel Chair at Ayurveda Campus







(U/S 2(f) and 12B of the UGC Act 1956, NAAC Accredited)

## DESH BHAGAT UNIVERSITY, MANDI GOBINDGARH

### 7.1.7 The Institution has disabled-friendly, barrier free environment

#### (Geo Tagged Photographs)

**1. Built Environment with Ramps/Lifts for Easy Access to Classrooms:** University is provided inclusive environment to support divyangjan in all aspects whether it is financial aid in study or to provide best infrastructure for them. Adding to this university has restructured ramps at three major buildings to make them more convenient. University has lifts in all major academic buildings to support disable friendly environment.



Ramp at Admission Cell



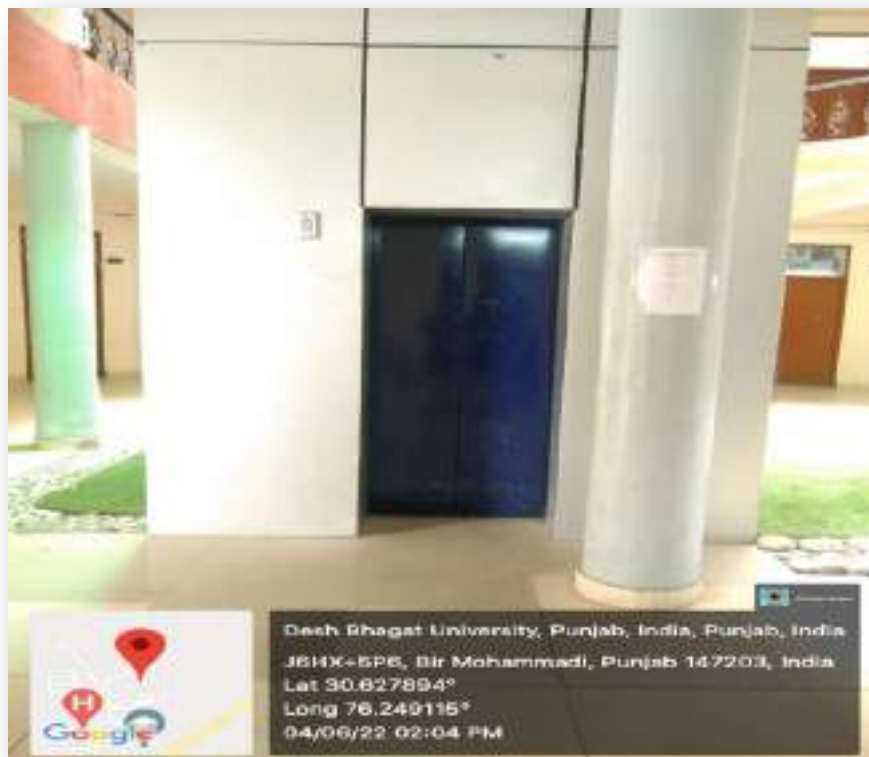
Ramp at School of Engineering & Applied Sciences



Ramps at University School of Ayurveda



Ramp at University Student Centre



Lift Facility at School of Engineering & Applied Sciences

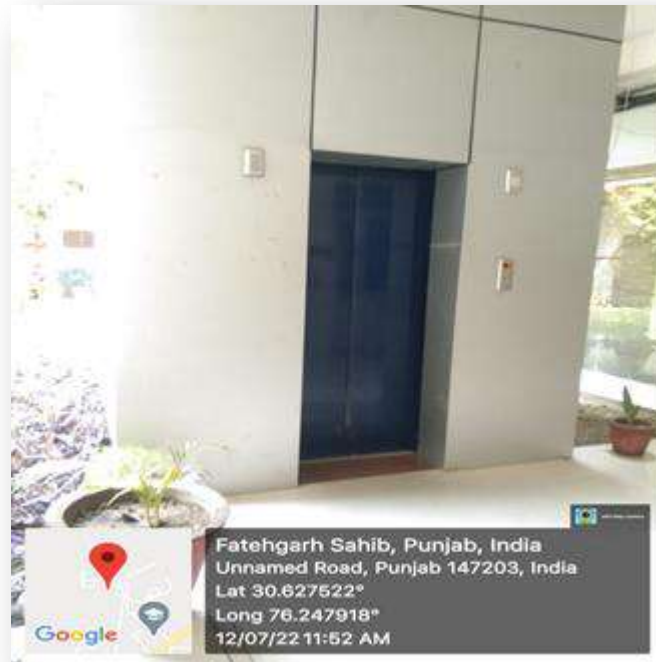




Lift Facility at School of Agriculture & Life Sciences



Lift at Central Library



Lift facility at Faculty of Dental Sciences



Lift facility at Faculty of Education

**2.Disabled-Friendly Washrooms** : University has special washrooms for divyangjan at each building and floor. Adding to this support university build 4 new washrooms for disable persons this year.



Washroom for Disabled at School of Pharmacy



Washroom for Disabled at School of Engineering & Applied Sciences



Special Washroom for differently abled at School of Dental Sciences





Special Washroom for differently abled at School of Dental Sciences



Special Washrooms for Differently Abled.

**3. Signage and Signposts in the Campus :** To facilitate the students and visitors university facilitated the signage's and path pointers at near each building and major points. Apart from this human support is also available at main gate and receptions to assist disabled persons in the university.



### Signage Board at Faculty of Nursing



Signage Board at Faculty of Engineering & Applied Sciences



Signage Board at Student Centre





Signage Board at Gate-2



Signage at Faculty of Pharmacy

- 4. Human Assistance and Transportation Facilities :** To Facilitate the persons with disability University has provided human assistance at main gate and Wheel chair is available at all campus main gates for persons having difficulty in walking.



Availability of Wheel Chair at Main Gate



Availability of Wheel Chair at Ayurveda Campus